

*City of St. John*

115 E 4th St, P.O. Box 367  
620-549-3208  
sjcity@stjohnks.gov

### **Lead Service Line Inventory Customer Survey**

The United States Environmental Protection Agency, in conjunction with the Kansas Department of Health and Environment, requires all public water supply systems to conduct a lead service line inventory of the public and privately owned water services within our jurisdiction. We want to stress that the City of St. John currently, and in the past, has had **NO** lead issues within our water supply system. We are sending out this survey to obtain information about the system's privately owned (customer side) service lines. Please take a few minutes and complete this customer survey to help us determine if you or your family have a lead exposure risk. If you would prefer, the City of St. John water department will gladly meet you at your property and help you complete this survey.

Lead can cause serious health problems if too much enters your body from drinking water or other sources. It can cause significant damage to the brain and kidneys, and can interfere with the production of red blood cells that carry oxygen to all parts of your body. The greatest risk of lead exposure is to infants, young children, and pregnant women. Even adults with kidney problems and high blood pressure can be affected by low levels of lead more than healthy adults. Lead is stored in the bones and can be released later in life. During pregnancy, the child received lead from the mother's bones, which may significantly affect brain development.

#### **How to Check**

**Water service line** - This is the main line from the water meter to your home.

**Primary internal plumbing** - The water lines entering the building.

**Secondary internal plumbing:** The water lines branch off the primary plumbing and supply water to the rest of the house.

The following are good places to look in your home: the basement, crawl space, behind washing machines, near the water heater, at the water shutoff to the building, behind toilets, and under sinks. New plumbing may use a manifold system that looks like a block with a bunch of valves and piping exiting it.

Please look at the second page of this survey for material definitions. Using a magnet is the easiest way to determine whether your pipe is lead or galvanized steel pipe. Lead pipe is non-magnetic, and when scraped, it will visually be shiny and silver. Galvanized steel pipe is magnetic and has a metallic gray appearance when scraped.

Please contact the City Office at 620-549-3208 if you would like to schedule a time for city employees to meet with you to check your pipes.

# Material Definitions

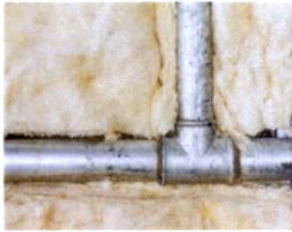


**Lead Pipe:** This is non-magnetic, and when scraped it will visually be shiny and silver.



**Copper Pipe:** This is non-magnetic, and when scraped it will look like the color of a penny.

**Copper Pipe w/ lead solder:** This is determined by the year range the plumbing was installed. Generally, this is after 1982 and before 1989.



**Galvanized Steel Pipe:** This is magnetic, and when scraped it has a metallic gray appearance.

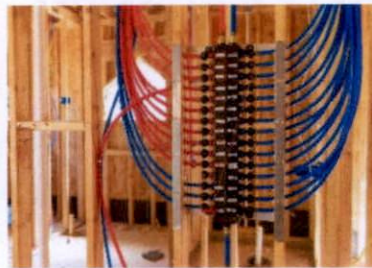


**Polyvinyl Chloride Pipe (PVC):** This is non-magnetic. It is generally a ridged, hard plastic material. White or dark gray are the most common colors.



**High Density Polyethylene (HDPE):** This is non-magnetic and more flexible than PVC. The most common color is black.

**Asbestos-Cement:** This looks very similar to concrete in color, generally a dull gray.



**Cross-linked polyethylene (PEX):** This is non-magnetic and looks similar to plastic hose material. It can be bent or curved in gentle circles. The most common colors are red and blue.

**Other Non-Lead Pipe:** This is any material not defined above.

# Lead Service Line Inventory Customer Survey

Please take a few minutes and complete this survey. If you are unsure, please contact us and we will be glad to meet and do the survey for you.

Name: \_\_\_\_\_

Address: \_\_\_\_\_

Phone: \_\_\_\_\_

Utility Billing Account #: \_\_\_\_\_

Date Complete: \_\_\_\_\_

## Primary Line Material

(The water lines entering the building)

**What is your water service line material?**

Copper \_\_\_\_\_

Galvanized Steel \_\_\_\_\_

PVC \_\_\_\_\_

Lead \_\_\_\_\_

Pex \_\_\_\_\_

**What size of pipe is your primary line?**

1/2" \_\_\_\_\_

3/4" \_\_\_\_\_

1" \_\_\_\_\_

2" \_\_\_\_\_

Unknown \_\_\_\_\_

## Secondary Line Material

(The water lines branch off the primary plumbing)

**What is your water service line material?**

Copper \_\_\_\_\_

Galvanized Steel \_\_\_\_\_

PVC \_\_\_\_\_

Lead \_\_\_\_\_

Pex \_\_\_\_\_

**What size of pipe is your primary line?**

1/2" \_\_\_\_\_

3/4" \_\_\_\_\_

1" \_\_\_\_\_

2" \_\_\_\_\_

Unknown \_\_\_\_\_

**What type of structure is this address linked to?**

Single Family Residence \_\_\_\_\_ Multi Family Residence \_\_\_\_\_ Commercial Building \_\_\_\_\_

**Do you have a filter on the faucet, reverse osmosis or water softener in use?**

Yes \_\_\_\_\_ No \_\_\_\_\_ If yes, list type of filtration \_\_\_\_\_

**What year was your house built?** Date \_\_\_\_\_ Date Estimate \_\_\_\_\_

**Have you had any major plumbing project completed on your home?** Yes \_\_\_\_\_ No \_\_\_\_\_

Please return this survey to the City Office at your convenience. Dropbox is available after hours or you can email this survey to [sjcity@stjohnks.gov](mailto:sjcity@stjohnks.gov). If you have any other questions, please contact us at 620-549-3208. Thank you for taking the time to complete this survey.

For additional information on the Lead and Copper Rule and identifying lead pipes, please visit websites below.

KDHE - [www.kdhe.ks.gov/547/](http://www.kdhe.ks.gov/547/)

EPA - [www.epa.gov/dwreginfo/lead-and-copper-rule](http://www.epa.gov/dwreginfo/lead-and-copper-rule)